

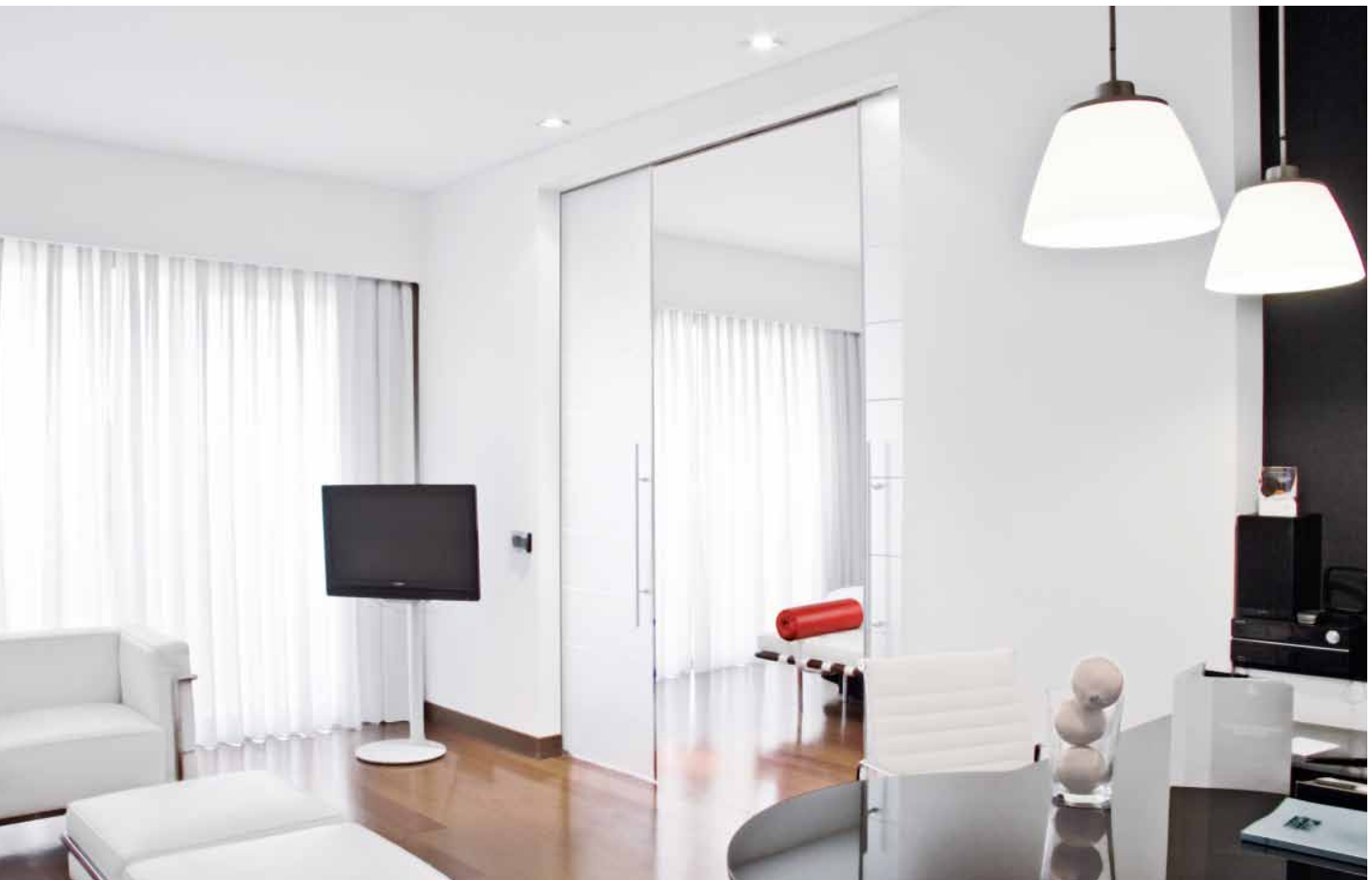
AGILE AND CS 80 MAGNEO

Interior sliding doors.
Manual or automatic action.



AGILE AND CS 80 MAGNEO. MANUAL AND AUTOMATIC SLIDING DOORS.

—
Convenient and space-saving interior solutions.



AGILE 150 manual sliding door as double-panel version – installed here on the bedroom side of the hotel room.



“Whenever we have our hands full,
automatic doors make life easier.”



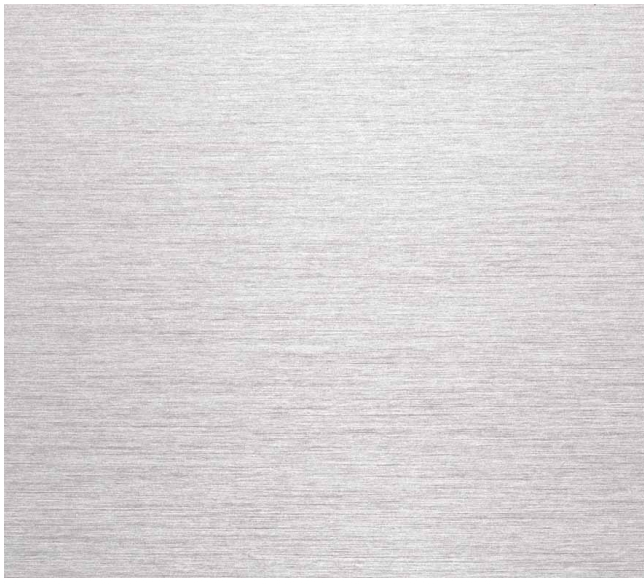
CS 80 MAGNEO automatic sliding door operator – here applied to the timber door of a conference room.

DORMA sliding doors are more than just space-saving solutions for areas where space is tight – they improve user convenience and create timeless design. Customers may choose between the AGILE sliding door system for manually operated doors

and the automatic version CS 80 MAGNEO. Both versions are of similar shape and offer matching surface finishes in simulated stainless steel. DORMA’s sliding door portfolio provides individual solutions in premium quality to meet the demands of

sophisticated room concepts – all suitable not just for professional environments such as offices, surgeries or law firms, but also for private homes.

CS 80 MAGNEO, NOW WITH LOCKING FUNCTION AND DORMA MATT STAINLESS STEEL DESIGN.



Apart from the existing aluminum surface finish, the automatic sliding door operator CS 80 MAGNEO is now also available in DORMA matt stainless steel design. Its clear look matches the stainless steel finish of the AGILE manual sliding door operator and further enhances sophisticated and modern interior designs.

In addition, DORMA offers MANET single-point fixings and a recessed door grip in matt stainless steel design. A new locking function with key switch control (for locking/unlocking purposes) protects the room from unauthorized access. The system's locking device is concealed behind the cover and therefore is not visible from the outside.



DORMA matt stainless steel design.

The CS 80 MAGNEO in DORMA matt stainless steel design matches the stainless steel look of the AGILE sliding door operator (see picture above).



“To me, automatic systems stand for greater ease of movement and a touch of luxury.”



- 1** CS 80 MAGNEO with locking device in DORMA matt stainless steel design.
- 3** MANET single-point fixings.



- 4** Locking function.
The CS 80 MAGNEO automatic sliding door operator now provides a locking function with key switch control in order to prevent unauthorized access. Its locking system is concealed behind the cover.

- 2** For enhanced ease of access: Motion detectors.

AGILE AND CS 80 MAGNEO. SLENDER PROFILES FOR PROFESSIONAL ENVIRONMENTS.

AGILE 150 manual sliding door. Full-glass solution in a transparent and luxurious design.



DORMA's AGILE and CS 80 MAGNEO sliding door solutions enhance the prestigious room concepts of law firms, surgeries, offices, showrooms, hotels and restaurants. Thanks to their intelligent functional range and harmonious design, they unite technology with aesthetic aspects. Furthermore, these solutions bring user convenience to a new level: In conjunction with a

radar motion detector, they allow contactless passage through CS 80 MAGNEO automatic sliding doors – especially suitable for through-passages between the kitchen and the restaurant or in sanitary areas.



“Automatic door solutions are almost indispensable when hygiene comes into play.”



CS 80 MAGNEO automatic sliding door. Especially suitable whenever doors need to be operated without direct contact, for example in healthcare facilities: Controlled by a proximity-type switch (MagicSwitch).

BUSINESS BECOMES LIFESTYLE. WITH AGILE AND CS 80 MAGNEO.

AGILE 150 DORMOTION manual sliding door. Spring cushion for a smooth closing cycle to the end position.



DORMA sliding doors show that convenience and functionality in office buildings can easily go together. Whether between office and conference room, or recep-

tion and cafeteria – AGILE and CS 80 MAGNEO create smooth transitions. Their slender profiles can be used either as a design feature or concealed either behind

the wall or inside the door frame.



“Our sliding door system makes office communication easier.”



“SoftMotion” safety in “Low-Energy Mode”

CS 80 MAGNEO, reassuringly safe: The automatic function softly stops the door as soon as the panel encounters

resistance. Thanks to this feature, usually no additional safety sensors are required – provided the system operates in the Low-Energy Mode.

CS 80 MAGNEO automatic sliding door – here activated by a motion detector.

AGILE – THE FITTING FOR MANUALLY OPERATED INTERIOR SLIDING DOORS.



Field of application	<p>Extremely versatile: For interior doors in public and commercial buildings and private homes including bathroom doors.</p> <p>Suitable for glass and timber doors</p> <p>For single- or double-panel door systems</p>
Door panel weight	<p>AGILE 50 for overall weights of up to 50 kg</p> <p>AGILE 150 for overall weights of up to 150 kg</p> <p>See technical brochure for further details</p>
Technical data	<p>DORMOTION technology: A smooth closing cycle to the end position thanks to spring cushioning.</p> <p>Syncro technology: As soon as a user moves one of the panels of a double-panel door system, the second door panel is activated in unison.</p> <p>Standard: Decelerated stop and safe stop in end position</p>
Dimensions	<p>AGILE 50: height 49 mm x depth 46 mm</p> <p>AGILE 150: height 63 mm x depth 54 mm to 83 mm (dependent on method of mounting)</p> <p>Opening widths depend on system.</p>
Design	DORMA Contur Design
Surface finishes	Various surface finishes: Anodized or powder-coated in any anodized or RAL color.
Operation	By pushing the door manually
Mounting	<p>Ceiling- or wall-mounting</p> <p>Mounting at fanlights of all-glass systems</p> <p>Easy mounting, rugged design, long product lifecycle</p>

Visit www.dorma.com for further manually operated sliding door hardware for interior doors.

CS 80 MAGNEO – THE OPERATOR FOR AUTOMATIC INTERIOR SLIDING DOORS.

Extremely versatile: For interior doors in public and commercial buildings and also private homes.

Suitable for glass, timber and metal doors

For single-panel door systems

For overall weights of up to 80 kg

Magnetic technology with “Low-Energy Mode”:
Usually, the system does not require additional safety sensors to DIN 18650, ANSI and BSI thanks to the door panel’s sensitive sliding action in the Low-Energy Mode.

Locking function

Height 62 mm or 75 mm, depth 60 mm
Opening widths from 665 mm to 1,125 mm and
3 operator lengths

DORMA Contur Design

Available in aluminum and DORMA matt stainless steel design
(to match the AGILE in simulated stainless steel)

Activation of automatic function via pushbutton, proximity-type switch (MagicSwitch), motion detector, remote control or coded transponder (AutoSwitch). Also suitable for manual activation via Push&Go function (a slight push against the door panel is enough).

Ceiling- or wall-mounting – visible or concealed.

Mounting at fanlights of all-glass systems

Easing mounting and commissioning thanks to Plug&Go (230 V standard power supply).
Reliable, low-wear and easy to upgrade.



CS 80 MAGNEO with “Low-Energy Mode”: The door will stop and reverse upon light contact.

Visit www.dorma.com for further automatic sliding door solutions in various fields of application.



DORMA GmbH+Co. KG
DORMA Platz 1
58256 ENNEPETAL
GERMANY
Phone +49 2333 793-0
Fax +49 2333 793-4950
www.dorma.com